

Evansville Vanderburgh School Corporation Logic Model

Problem Statement: EVSC Family Engagement Policy and Guidelines needs to be strengthened to reflect the vision and mission of the district. The EVSC Family Engagement Policy and Guidelines need to be implemented with consistency and fidelity at the district, school, and community and family level.

Goals: To create a robust EVSC District Family Engagement Policy that will foster improved communication and partnership between families and schools that will ensure improved student success.

Impact: Schools and staff will know how to access and use community resources to increase family engagement and support student success. Families will feel welcomed with schools and feel like a partner in their student's education. The needs of the students and families will be addressed through increased partnerships. And with everyone engaged student will attend school, perform at grade level or higher and graduate.

Roles, Responsibilities and Resources

Activities

Progress

District: Provide PD to support schools' successful implementation of the EVSC Family Engagement Policy; align FE work to RTI framework and Minds in the Making Initiative

District: With ETA, provide PD to the district (FET/school staff); create and share tools reflecting best practice; Collect and share individual school data; Establish district FET

District:

- PD – Jan 2012 Conference
- Stakeholders Survey – 2010/2011
- School Mapping – Nov 2011
- Com School Rubric - March 2012

Building: The administrator will establish and support a school Family Engagement Team that will develop their school's Family Engagement Plan which is aligned to the District Family Engagement Policy and their school's Improvement Plan

Building: Establish a school FET that meets quarterly to create and implement a family engagement plan that is aligned to the EVSC policy and their school's improvement plan. School staff and families will receive PD in effective family engagement

Building:

- FE Teams – 2010/2011
- PD for Teams – 2010
- School Mapping – Nov 2011
- FE Events – various schools 2010/2011

Staff: Will effectively engage families in their child's education. Will provide input to the school's Family Engagement Plan. Will implement with fidelity the strategies outlined in the District and School Family Engagement Plan.

Staff: Develop a meaningful relationship with the families of their students that focuses on partnering for student success. Provide input and support for the implementation of the EVSC Family Engagement Policy and the School Family Engagement Plan.

Staff:

- FE Teams – 2010/2011
- PD for Teams – 2010
- PD – Jan 2012 Conference

Family/CP: Will be involved in the creation and implementation of the EVSC Family Engagement Policy and support the implementation of the Family Engagement Plan at their child's school.

Family/CP: Attend events, workshops and universities to help increase open communications with school staff. Be part of the FET. Provide input on stakeholders surveys and help create school-family compact.

Family/CP:

- PD – Jan 2012 Conference - few
- Stakeholders Survey – 2010/2011 - minimal return

Next Steps

District:

- Establish a District FE Team
- Work with ETA to provide PD
- Develop Walk Through Tools
- Share tools and guidelines

Building:

- Provide PD
- Strengthen FET and Site Councils
- Use data to create FE plan aligned with building improvement plan
- Allocate staff, time and resources

Staff:

- Create grade level compact
- Be part of FET or Site Council
- Create open communications with families
- Connect student needs to resources
- Create engagement opportunities

Family/CP:

- Help create school compact
- Provide input
- Be engaged
- Encourage student success

EVSC School-Community Council

Big Table – networking
Team of over 80
agencies

**Leadership Advisory
Council** – approval of
projects and program,
advocacy

Evaluation Team –
collection of data,
creation of tools

Communication team –
creation of family friendly
information

Asthma and Allergy Team
– education and awareness
for parents and students –
Camp Nota-Gona-Wheeze

**Nutrition and Physical
Activities Team** –
education and awareness
around healthy lifestyle
choices


**Social and Emotional
Team** – education,
awareness, creation of
programs for behaviors
and families

Mentoring Team – one to
one, small group, formal
and informal mentoring of
students

Tutoring Team – one to
one, small group, in school
and after school tutoring

Family Engagement Team
– parents and staff working
together for student
success

 = functioning team

 = newly forming

 = concept stage

School-Community Council Teams and Projects

Asthma and Allergy

•ACTIVE MEMBERS

- Diana Butler - EVSC - Chair
- Jackie Richards - St. Mary's
- Julie St. Clair - USI
- Casey Williams - SmokeFree Communities
- Lacy McNear - St. Mary's
- Dona Bergman - EVV EPA

•OTHER MEMBER

- Dr. Ann McLaughlin - Deaconess
- Dr. Anthony Shapker - Heborn Peds
- Dr. Jason White - Asthma and Allergy

•PROJECTS/EDUCATION

- Camp Nota-Gona-Wheeze
- Food Allergy Guidelines
- Food Allergy / Reaction Video
- Coaches Clipboards - ed
- Radical Randy - Ed classes
- "Self Admin/Self Carry" contract
- Open Airways - Elem Ed
- Power Breathers - MS Ed
- St. Mary's Outreach 1 to 1 - Ed

Nutrition and Physical Activities

•ACTIVE MEMBERS

- Linda Lutz - EVSC Co- Chair
- Lacy McNear - St. Mary's - Co-chair
- Linda Eidson - EVSC
- Diana Butler - EVSC
- Christine Knapp - VCHD
- Jackie Richards - St. Mary's
- Rhonda Meade - W B F
- Susan Plassmeier - Purdue Extension
- Monica Landaeta - HOLA

•OTHER MEMBERS

- over 25 members of the team moved to Healthier Evansville to work on Community projects

•PROJECTS/EDUCATION

- Healthier Evansville - member
- Breakfast in classroom
- Water in classroom
- Fundraising Tool-Kits
- Healthy Outlook school programs
- SPARK
- Playfit - structured recess
- Minds in Motion - Ed
- St. Mary Outreach 1 to 1 - Ed
- Wellness Policy
- Safe Routes to School

Social and Emotional Learning

•ACTIVE MEMBERS

- Marcia Staser - EVSC - Chair
- Sara Battieger - ECLC
- Diana Butler - EVSC
- Mary Beth Davis - St. Mary's
- Davi Stein - Youth First
- Donna Culley- EVSC
- Alma Dabrowski - EVSC
- Laura Wathen - Youth First
- Linda Lutz - EVSC
- Tim Tharp - Mulberry Center
- Gina Gibson - EVV Christian Life Ctr
- Leanne Kelle- ECLC

•OTHER MEMBERS

- Larry Bass - EVSC
- Dionne Blue - EVSC
- Kent Leslie - Deaconess Cross Pointe
- Susan McDowell-Riley - EVSC
- Elizabeth McGovern - EVSC
- Dr. Maria Del-Rio Hoover - St. Mary's
- Mary Schweizer - EVSC

•PROJECTS/EDUCATION

- Programs for New Alternative Academy
- Truth Talk - 16 to 21 schools - ECLC
- Solutions - anger management with Lampion and Youth Service Bureau
- HeartMath
- Programs connected with Student and Family Support Services
- School Based Mentoring

Big Table

ACTIVE ORGANIZATIONS

- EVSC
- SALVATION ARMY
- BIG BROTHERS/BIG SISTER
- EVPL
- JR. ACHIEVEMENT
- PATCHWORK CENTRAL
- WELBORN BAPTIST FOUNDATION
- YOUTH RESOURCES
- 4H CENTER
- PUBLIC EDUCATION FOUNDATION
- EVANSVILLE DAY SCHOOL
- DEACONESS
- ST. MARY'S
- JUVENILE COURT
- ST. VINCENT DAYCARE
- SYCAMORE SERVICES
- PURDUE EXTENSION
- COMMUNITY MARRIAGE BLDRS
- BOY AND GIRL SCOUTS
- UNITED WAY
- YMCA/YWCA
- CAPE
- USI / UE / IVY TECH
- HOLA
- ECDC
- EVV EPA
- LAMPION CENTER
- 4 C'S
- SOUTHWESTERN BEHAVIORAL HEALTH CARE INC.
- SOUTHWESTERN FOUNDATION
- EVANSVILLE CHRISTIAN LIFE CENTER

Big Table

- ANTHEM
- 21ST CENTURY SCHOLARS
- SICAN
- HOLLY'S HOUSE
- IRELAND LUZIO
- SMOKEFREE COMMUNITIES
- EVSC AREA PTA
- ETA
- DEACONESS CROSS POINTE
- LEGAL AID
- THE DIET DOCTOR
- SENATOR LUGAR'S OFFICE
- CARVER COMMUNITY ORGANIZATION
- AURORA
- EVANSVILLE HABITAT
- DEACONESS FAMILY PRACTICE
- TRISTATE FOOD BANK
- OCONNOR CREATIVE
- CMOE
- YOUTH FIRST
- SICAN
- EVANSVILLE CATHOLIC DIOCESE
- AMERICAN RED CROSS
- AMERICAN DIETETIC ASSN
- WILLARD LIBRARY
- CITY OF EVANSVILLE
- DEPT. OF CHILD SERVICES
- YOUTH SERVICE BUREAU
- WNIN
- NETWORKING AND COLLABORATION OF COMMUNITY PARTNERS

Communications

•ACTIVE MEMBERS

- Patricia Weinzapfel- EVSC - Chair
- Marsha Jackson - EVSC
- Sam Crecelius - Diehl Evaluation
- Jeff Bruce - Axiom

•OTHER MEMBERS

- Carol Braden-Clarke - United Way
- Pat O'Connor - o'conner/creative
- Jack Shriber - EVSC

•PROJECTS/EDUCATION

- Marketing and branding for SCC, CFSCP, and Family Engagement including brochures, flyers, give-aways
- District Family Calendar - contributions and corrections
- Outside / other company newsletters

Evaluation

•ACTIVE MEMBERS

- Chuck Watson - UE
- Dan Diehl - Diehl Consulting
- Sylvia Groves - EVSC
- Patricia Weinzapfel- EVSC
- Susan Riley - EVSC
- Jerry Yezbick - Anthem/HIP

•OTHER MEMBERS

- John Browning - Community
- Mary Schweizer - EVSC

•PROJECTS/EDUCATION

- Grant reports
- Executive briefs
- Partnership survey
- Stakeholders survey
- Strategic Plan

Leadership Advisory Council

• ACTIVE MEMBERS

- John Browning - SHB, Inc.
- Dan Diehl, Diehl Consulting
- Carol Braden-Clarke, United Way
- Cathy Gray - EVSC
- Keith Gambill - ETA
- Parri Black - Youth First
- Christine Settles - EVSC
- Kevin Bain - WBF
- Mayola Rowser - USI
- Parri Black - Youth First
- Mary Schweizer - EVSC
- Shirley Stark - DFC Services
- Dan Ulrich - EVSC
- Patricia Weinzapfel - EVSC
- Kim Johnson - EVSC

•OTHER MEMBERS

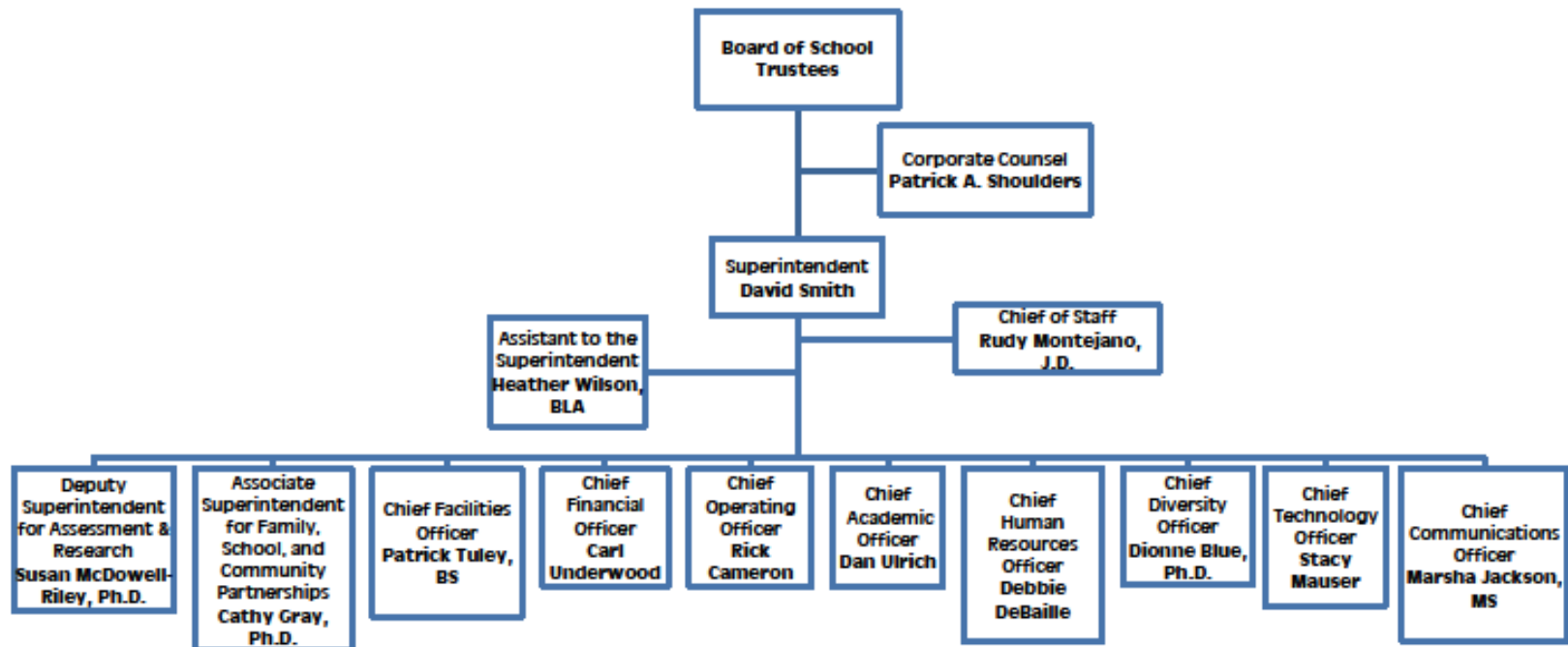
- Co - chairs of each team

Other Coalitions /Groups/Partnerships

- Early Childhood Development Coalition
- Evansville Regional Autism Coalition
- Parents Support Group for Autism
- Family Engagement
- Trails Coalition / Safe Routes or Kids
- CSH Back to School Blitz
- Unity Fest / Minister Wives
- HOLA / Back to School Blitz
- Welborn Foundation HEROES Taskforce

Office of the Superintendent

1 SE Ninth Street, Room 201, Evansville, IN 47708 812-435-8477



Evansville Vanderburgh School Corporation

Bringing Learning to Life.

Center for Family, School, and Community Partnerships



Center for Family, School, and Community Partnerships

